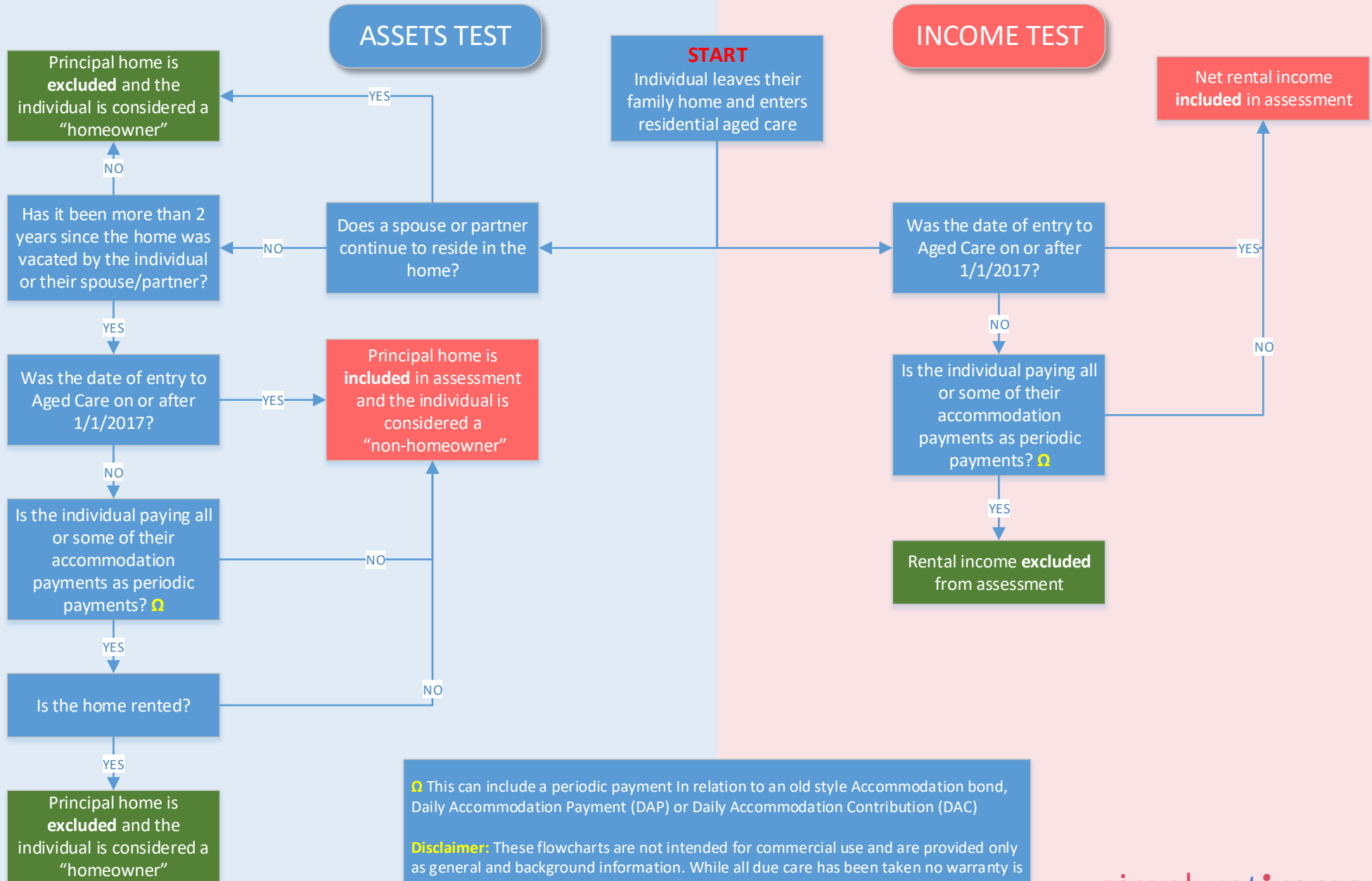


1

Principal or Family Home Treatment: Age Pension

When an individual leaves their home to enter Aged care: Age Pension impact.



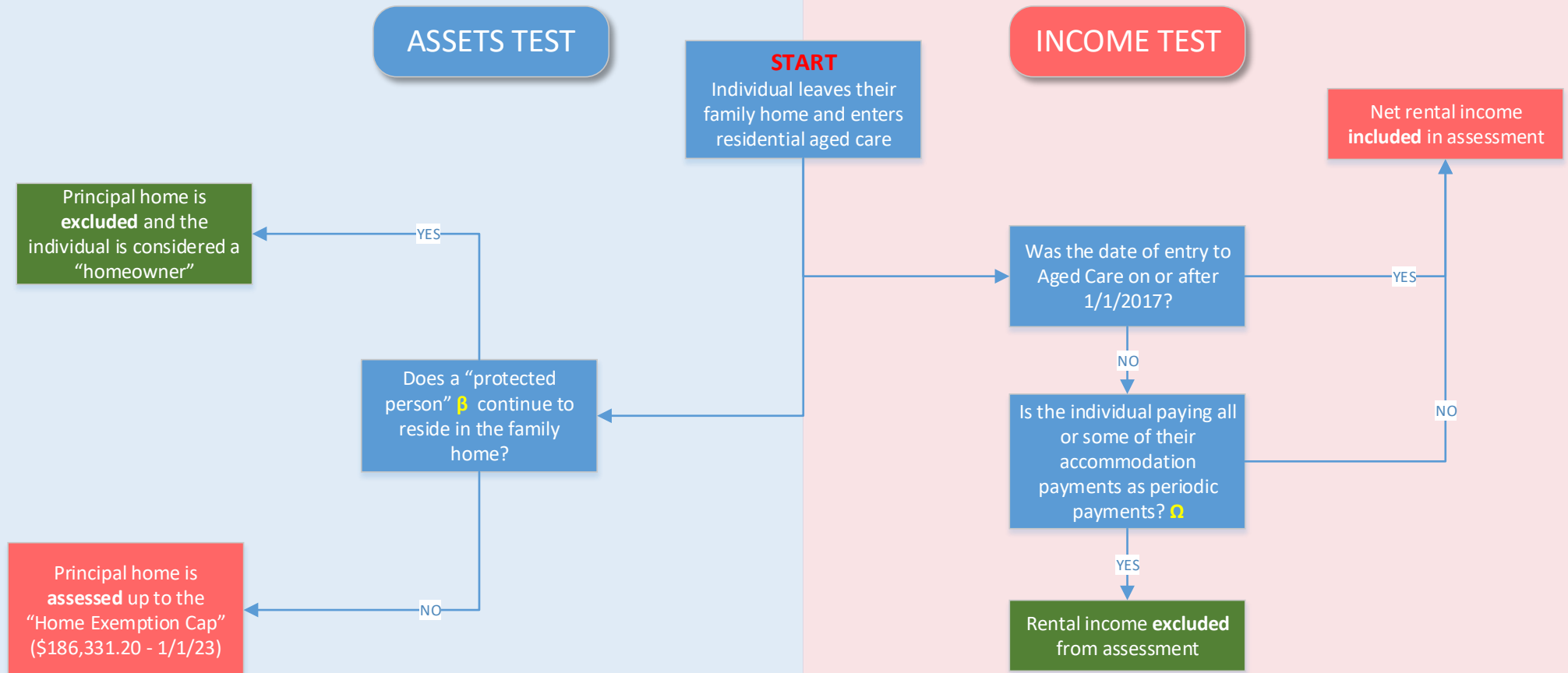
Ω This can include a periodic payment in relation to an old style Accommodation bond, Daily Accommodation Payment (DAP) or Daily Accommodation Contribution (DAC)

Disclaimer: These flowcharts are not intended for commercial use and are provided only as general and background information. While all due care has been taken no warranty is provided in relation to this material and specific professional advice is recommended.

2

Principal or Family Home Treatment: Aged Care

When an individual leaves their home to enter Aged care: Impact on Aged care contributions.



Ω This can include a periodic payment in relation to an old style Accommodation bond, Daily Accommodation Payment (DAP) or Daily Accommodation Contribution (DAC)

β A "protected person" is:

- a partner or dependent child, or
- a carer who is eligible to receive an Australian Government income support payment and who has lived in the home with the individual for the past 2 years, or
- a close relation who is eligible to receive an Australian Government income support payment and who has lived in the home with the individual for the past 5 years